

Multimedia Test



Photo: Fernando García-García, May 2013



In this picture, what are the season and time in Moscow?

A. winter, early evening

B. summer, early morning

C. summer, late morning

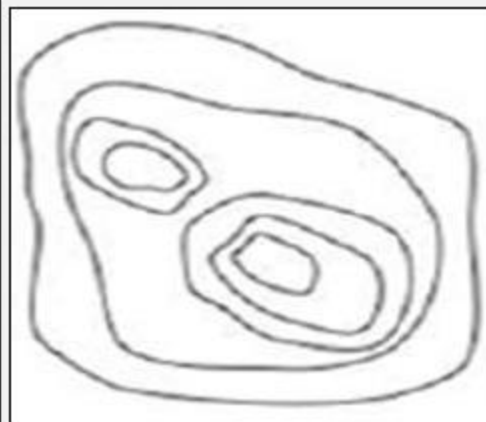
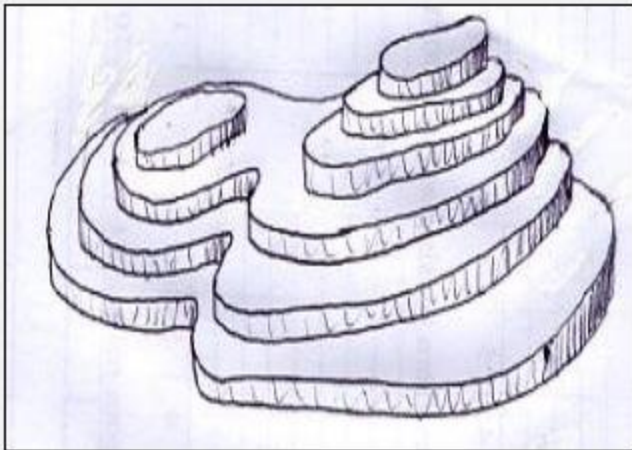
D. winter, early morning

Q 5



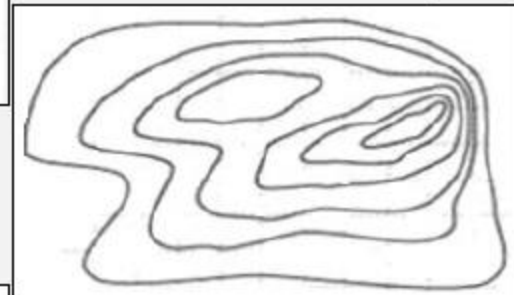
Q 15

Which contour map matches the three-dimensional draft shown below?

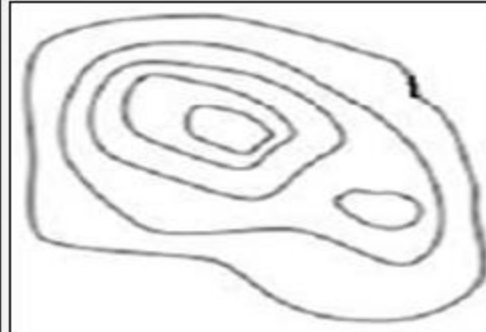


A

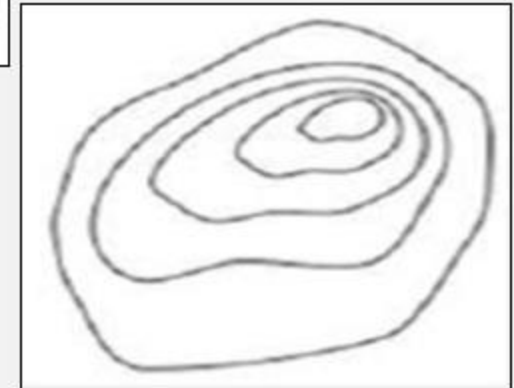
B



D



C



Q 17

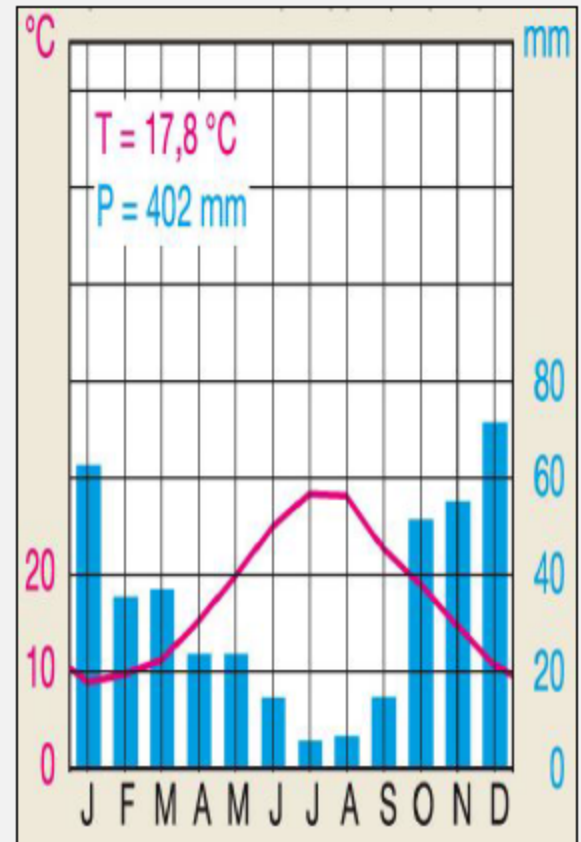
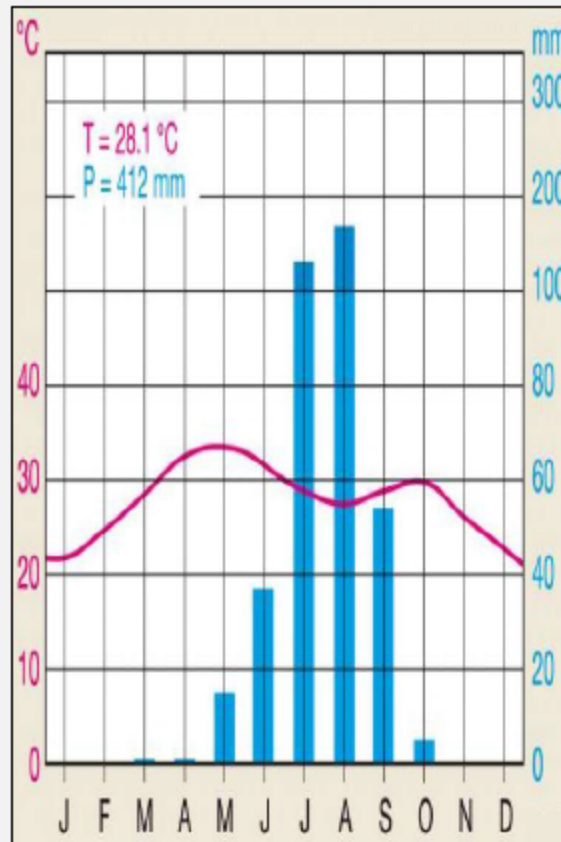
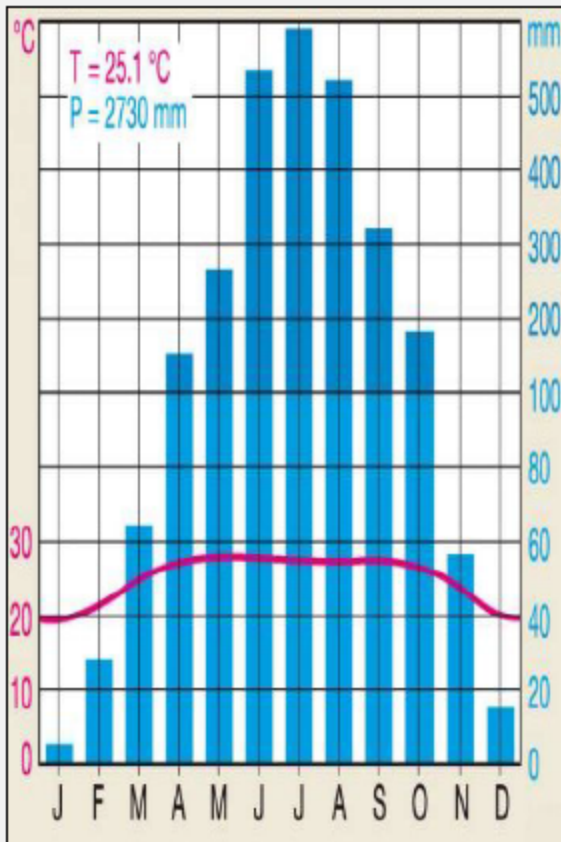
From left to right, what is the correct sequence matching these climate graphs to the following cities:
1: Athens (Greece) 2: Chittagong (Bangladesh) 3: Zinder (Niger)?

A. 1, 2, 3

B. 1, 3, 2

C. 2, 3, 1

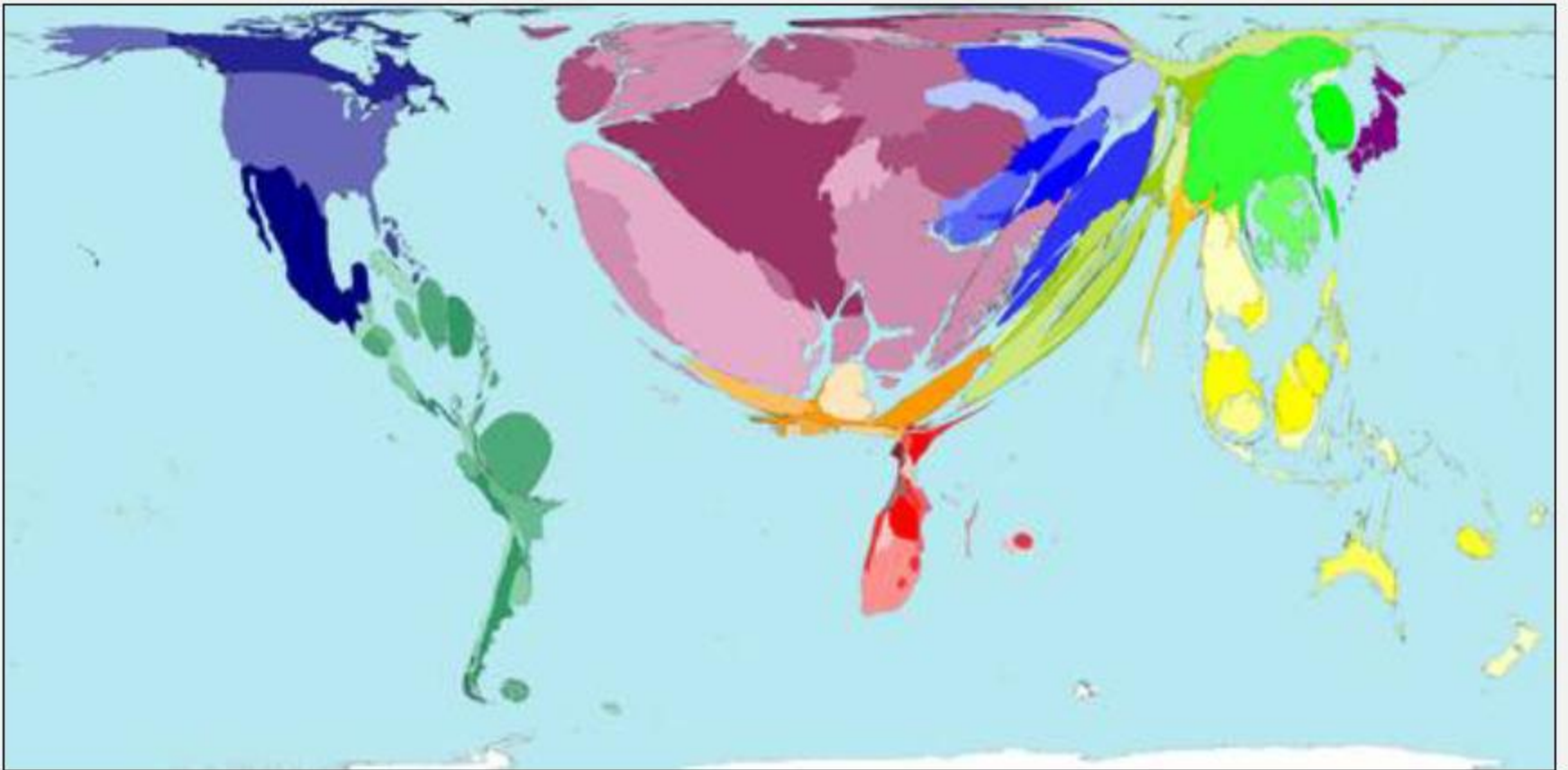
D. 3, 2, 1



Q 2

What does this map represent?

- A. cereals exports
- B. carbon dioxide emissions
- C. total population
- D. international tourists arrivals



Q 18

Based on the table below, which of these Central American countries (marked on the map as *A*, *B*, *C* and *D*) is more likely to have the lowest emigration rate due to push factors?

Country	GDP per capita (2005 PPP \$)	Adult literacy rate (% aged 15 and above)	Average annual population growth rate (%)	Infant mortality rate (per 1,000 live births)
Nicaragua	2,499	78.0	1.3	23
Costa Rica	10,453	96.2	1.6	9
Honduras	3,519	84.8	2.0	20
Guatemala	4,297	75.2	2.5	25